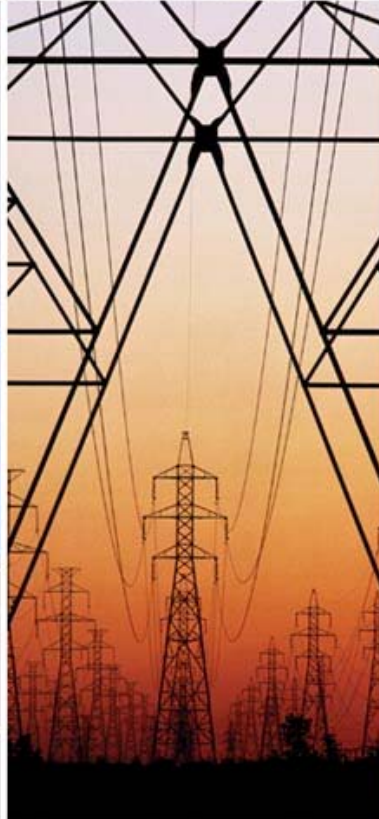


# Installing GeoMedia Grid



The Intergraph logo consists of a blue, curved line above the word "INTERGRAPH" in a bold, blue, sans-serif font.

### **Warranties and Liabilities**

All warranties given by Intergraph Corporation about software are set forth in the End User License Agreement and Limited Product Warranty (“EULA”) provided with the software, and nothing stated in or implied by this document or its contents shall be considered or deemed a modification or amendment of such warranties.

The information and the software discussed in this document are subject to change without notice and should not be considered commitments by Intergraph Corporation. Intergraph Corporation assumes no responsibility for any error that may appear in this document.

No responsibility is assumed by Intergraph for the use or reliability of software on equipment that does not meet the specified requirements as found in the product Readme.

### **Trademarks**

Intergraph and GeoMedia are registered trademarks of Intergraph Corporation. Windows and Windows Vista are registered trademarks of Microsoft Corporation. FLEX<sup>lm</sup> is a registered trademark of Macrovision Corporation. TerraExplorer is a registered trademark of Skyline Software Systems, Inc. All other brands and product names are trademarks of their respective owners.

### **Copyright**

**© 2006-2008 Intergraph Corporation. All Rights Reserved.**

Including software, file formats, and audiovisual displays; may be used pursuant to applicable software license agreement. Contains confidential and proprietary information of Intergraph and/or third parties, which is protected by copyright and trade secret law, and international treaty, and may not be provided or otherwise made available to end users other than purchaser without proper authorization from Intergraph Corporation.

The software discussed in this document is furnished under a license and may be used or copied only in accordance with the terms of the accompanying license. Because these documentation files are delivered as PDF files, an industry-standard format, most photocopy vendors can print them for you from the PDF file. You have permission to make two hardcopies per license for your internal, non-commercial use. Purchaser shall not have reproduced more than two hardcopies per license without prior written permission from Intergraph Corporation.

### **U.S. Government Restricted Rights Legend**

Software is subject to the U.S. Export Regulations. Any diversion of the software that is contrary to U.S. law is prohibited.

Use, duplication, or disclosure by the government is subject to restrictions as set forth below. For civilian agencies: This was developed at private expense and is “restricted computer software” submitted with restricted rights in accordance with subparagraphs (a) through (d) of the Commercial Computer Software - Restricted Rights clause at 52.227-19 of the Federal Acquisition Regulations (“FAR”) and its successors, and is unpublished and all rights are reserved under the copyright laws of the United States. For units of the Department of Defense (“DoD”): This is “commercial computer software” as defined at DFARS 252.227-7014 and the rights of the Government are as specified at DFARS 227.7202-3.

Unpublished – rights reserved under the copyright laws of the United States.

### **Terms of Use**

**Use of this software product is subject to the EULA delivered with this software product.**

**Intergraph Corporation**

**Huntsville, Alabama 35813-0001**

# Installing GeoMedia Grid

GeoMedia® Grid uses Windows® Installer to install the software.

## Steps to Take before You Install GeoMedia Grid

- Verify that you have GeoMedia Professional 6.1 or GeoMedia 6.1 installed and properly licensed on your system.  
*See the “Licensing GeoMedia Products” section for more information.*
- Verify that your system meets or exceeds the requirements for GeoMedia Grid 6.1 listed in the *GeoMedia Grid ReadMe*.
- Verify that you have administrator privileges on the system where you want to install GeoMedia Grid.
- Verify that you have Microsoft® .NET Framework version 2.0 or higher installed on your system. See Microsoft documentation for more information on installing and using .NET.
- You must remove previous versions of GeoMedia Grid before installing GeoMedia Grid 6.1. You will not be able to install this version over a previous version. Go to Control Panel and use **Add or Remove Programs** to remove any previous versions of the product.

## Installing GeoMedia Grid

1. Close all Windows programs.
2. Insert the **GeoMedia Grid CD** into the CD-ROM drive, or connect to the shared network folder containing GeoMedia Grid.
3. If you are installing from a shared network drive, or if the installation process does not start automatically, use Explorer to navigate to the GeoMedia Grid delivery folder and double click the filename *Setup.exe*.
4. When the **GeoMedia Grid Setup** dialog box appears, read the instructions and follow the prompts to install the product.
5. When the installation process is complete, click **Finish**.

## **TerraExplorer**

Installing GeoMedia Grid automatically installs the Skyline Software Systems TerraExplorer® product, which provides a 3D visualization system. You can access TerraExplorer through the GeoMedia Grid **Construct 3D Model** and **Fly 3D Model** commands as well as from the **Start** menu and the TerraExplorer desktop icon.

See [http://www.skylinesoft.com/corporate/corporate\\_home.asp](http://www.skylinesoft.com/corporate/corporate_home.asp) for technical assistance with and more information on Skyline Software Systems products. See [http://www.skylinesoft.com/interactive/terraexplorer/tepx\\_faqs.asp#requirements](http://www.skylinesoft.com/interactive/terraexplorer/tepx_faqs.asp#requirements) for system requirements for TerraExplorer.

## **Licensing GeoMedia Products**

The GeoMedia 6.1 suite of applications uses a licensing scheme based on FLEXlm®, a popular license manager used in the software industry. The two modes of FLEXlm licensing used by the GeoMedia suite of products are nodelocked and concurrent.

Please visit our licensing web site at <http://www.intergraph.com/sgi/license> to generate or to view your licenses. You can also use the Licensing Utility (**Start > All Programs > GeoMedia Professional > Utilities > Licensing Utility**) to aid you in generating a license.

---

**Note:** GeoMedia Grid 6.1 will run unlicensed (in nodelocked mode only) for a grace period of 30 days after installation. As with any nodelocked license, you cannot use Remote Desktop or Terminal Services; this functionality requires a concurrent license.

---

## **Important Note for SQL-Server Users**

To use SQL-Server read-write warehouses created using a version before 05.02.02.57 of GeoMedia Grid, it is necessary to add a primary key to the *MFCComResolutionAlias* table. A script that will do this has been placed on the GeoMedia Grid installation CD in the *\SQL UPDATE* folder.

Run this script using, for example, the SQL Query Analyzer. It will non-destructively update the table only if it exists. You need only run this script for older warehouses; warehouses created using version 5.2 or higher will automatically have a primary key on the *MFCComResolutionAlias* table.

The script assumes that the *MFCComResolutionAlias* table is owned by "dbo". If the user/DBA has changed ownership of this table, please replace the ten "dbo" references in the script with the correct schema.

## Loading GeoMedia Grid on a 64-bit Operating System

This section provides the system administrator and end user with information on installing and deploying GeoMedia Grid on a 64-bit operating system. If you run on a 64-bit operating system, such as Windows Vista® x64, you will need to know the differences discussed in this section. GeoMedia Grid is a 32-bit application, but it can be run on most 64-bit processors. Loading GeoMedia Grid on a 64-bit operating system will result in a few changes in folder and license file locations, registry entries, and use of Microsoft Windows tools.

*Folder Location*—Folder structures for GeoMedia Grid are different on 32-bit and 64-bit operating systems. On a 32-bit operating system, these folders install under *C:\Program Files*. On a 64-bit operating system, all GeoMedia Grid folders and Common Files folders install under *C:\Program Files (x86)*.

*License Files*—When placing a license file for GeoMedia Grid on a 64-bit operating system, it must be placed in the folder *C:\Program Files (x86)\Common Files\Intergraph\Ingr\_Licenses*. Note there is no Intergraph folder in *C:\Program Files\Common Files* on a 64-bit operating system. Like the license folder, GeoMedia Grid will be placed in *C:\Program Files (x86)\GeoMedia Grid*.

*Registry Entries*—In a similar fashion, GeoMedia Grid and related registry entries are different on a 64-bit operating system. GeoMedia Grid HKEY\_CURRENT\_USER registry entries are unchanged on a 64-bit system, but HKEY\_LOCAL\_MACHINE registry entries are in a different location. The new location for local machine entries for GeoMedia Grid on a 64-bit operating system is HKEY\_LOCAL\_MACHINE > Software > Wow6432Node > Intergraph. If the FlexLM entry for GeoMedia Grid licensing needs to be modified for license file location or concurrent license server reference, it is also in the new location at HKEY\_LOCAL\_MACHINE > Software > Wow6432Node > FlexLM license manager.

*32-bit Compatible Applications*—Any 32-bit compatible operating system application used in conjunction with GeoMedia Grid has also been relocated on a 64-bit operating system. For example, *ODBCad32.exe* is the application used to create ODBC DSNs that may be used for various GeoMedia warehouse connections. There are two different *ODBCad32.exe* files on a 64-bit Windows operating system. One normally resides in *C:\Windows\System32*, the other in *C:\Windows\SysWOW64*. Because a 64-bit operating system can run both 32-bit and 64-bit applications, a folder is used to distinguish 32-bit applications from 64-bit applications. Operating system applications available from Windows Explorer views reference 64-bit applications. If you need to run a 32-bit Windows application, you must browse to the 32-bit folder, and then run the application from there. The 32-bit Windows applications will be found in *C:\Windows\System32*. The 64-bit applications will be found in *C:\Windows\SysWOW64*.

## Documents Provided with GeoMedia Grid

The following online documents are installed during GeoMedia Grid installation:

Document	Description
<i>Installing GeoMedia Grid</i>	Instructions for installing the product. Available online in <i>.pdf</i> format through the PDF Viewer from <b>Start &gt; All Programs &gt; GeoMedia Grid</b> and on the product CD in the root directory.
<i>GeoMedia Grid Help</i>	Step-by-step instructions for all tasks and information about tools and dialog boxes. Available in the software and from <b>Start &gt; All Programs &gt; GeoMedia Grid</b> .
<i>Introduction</i>	Information on getting started with GeoMedia Grid. Includes PDF document and the all necessary data. Available online from <b>Start &gt; All Programs &gt; GeoMedia Grid</b> .
<i>GeoMedia Grid Tutorials: Customer Based, How_Do_I, and MiniTutorials</i>	Sample workflows using GeoMedia Grid. Include PDF documents and all data. Available online from <b>Start &gt; All Programs &gt; GeoMedia Grid</b> .
<i>GeoMedia Grid Object Reference</i>	Programmer's guide to the objects, methods, and properties in the software's automation layer. Available online from <b>Start &gt; All Programs &gt; GeoMedia Grid</b> .
<i>GeoMedia 3D Viewing Help</i>	Instructions for 3D commands and dialog boxes. Available in the software and from <b>Start &gt; All Programs &gt; GeoMedia Grid</b> .

## Starting GeoMedia Grid

To start working with the GeoMedia Grid command set, start GeoMedia Professional or GeoMedia, open a GeoWorkspace, and select **Grid** from the GeoMedia Professional or GeoMedia menu bar to display the GeoMedia Grid menu.

## Removing GeoMedia Grid from Your System

To remove GeoMedia Grid from your system, use the following procedure:

1. From the **Control Panel**, select **Add or Remove Programs**.
2. Select **GeoMedia Grid**.
3. Click **Remove**.

4. Click **Yes**.
  5. If prompted, restart your computer.
- 

**Note:** Removing GeoMedia Grid does not remove TerraExplorer. To remove this product from your system, follow the above procedure for **TerraExplorer**. You can reload TerraExplorer from the setup CD.

---

## ***Repairing Your GeoMedia Grid Installation***

If your GeoMedia Grid installation stops working, you can use the **Repair** option to check it and to replace any missing or corrupt files. To repair your GeoMedia Grid installation, use the following procedure:

1. From **Control Panel**, select **Add or Remove Programs**.
  2. Select **GeoMedia Grid**.
  3. Click **Change**.
  4. Click **Next**; and then click **Repair**.
  5. Click **Install** to begin the process of checking and replacing corrupt or missing files.
  6. When the installation is complete, click **Finish**.
- 

**Note:** No Repair option is available for TerraExplorer; however, you can remove and then reload this product.

---

---

Additional information on Intergraph Support and Services is available on the Internet.  
Use a web browser to connect to Intergraph Online at <http://www.intergraph.com/>.

For general Intergraph information, call 1-800-791-3357 (U.S. and Canada) or  
001-256-730-2000 (international).

Installing GeoMedia Grid  
01/2008  
DJA099030